



Group Profile

Brief profile

- Turnover at \$ 555 Million (Rs. 2500 Crores) for 2010-11
- 25 Plants in India & Overseas, office in Europe, Japan.
- No. of employees over 9500
- Domestic & International Customers, Global Organisation
- Ashok Minda Group is targetting at a top line of INR 11,000 Cr. (\$2.45 billion) by FY 2014-15

Major Product Lines

1. Safety, Security & Restraint System
 - a) Electronic & Mechanical Security systems, E Bike Controllers
 - b) Window Regulators & Door Checkers
 - c) Keys & Key Duplicating M/c
 - d) Die Casting
 - e) Surface Finishing
2. Driver Information & Telematics System
 - a) Connective Systems
 - b) Instrument Clusters, Sensors
3. Interior System

Interior Trims & Sub-Systems, Kinematic Modules, Under Hood and Under Body Systems, Composites- NVH & Structural Modules, Soft Touch Technology etc.

Product Lines

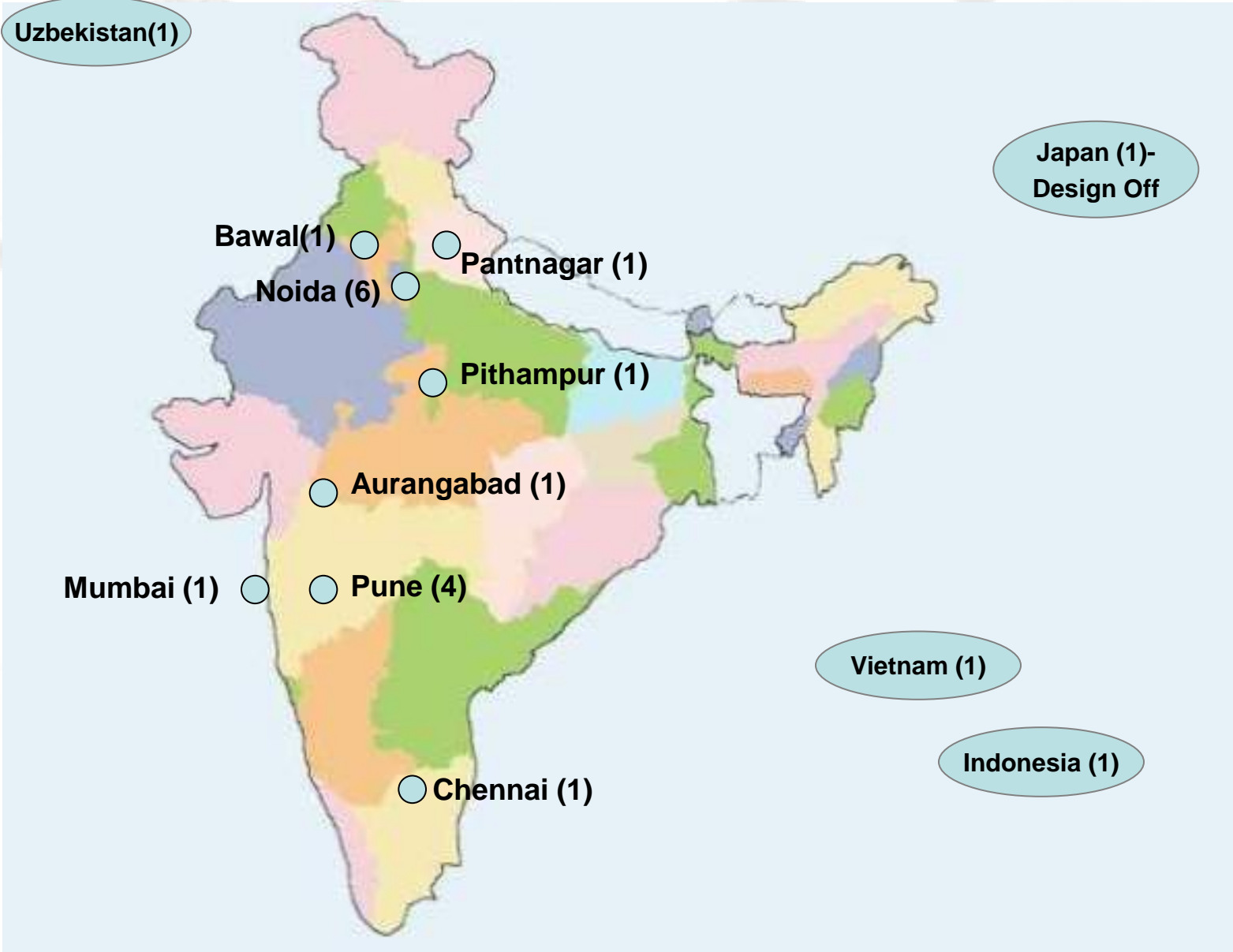
Safety, Security & Restraint systems	Driver Information & Telematics systems	Interior systems
<p>Electronic & Mechanical security systems</p> <p>E-bike controllers</p> <p>Immobilizers, Latches, Strikers, Door Handles, Electronic Body controllers, Start Systems, power closure systems, Passive entry systems</p>	<p>Instrument Clusters, Dashboard assemblies, Digital Clocks, Sensors, Tank Units & Gauges</p>	<p>Injection moulding, 2-K-Molding Process</p> <ul style="list-style-type: none"> -Kinematic components and premium surfaces -Garnish Trims, -Dashboard, Consoles, Parcel Shelf, -Air Vents, Air ducts, Ash Trey, Arm rests, Cup Holder, -Bumper, Bumper Grills, Body Side Molding, -Fender, Cylinder Head Cover, Glove box -Parts for technical applications including Skinform technology -Kinematic interior modules-Total development, -Truck-Oil housings, -Rear Seat Shell Structure -Underhood covers, -Air louvers, -Couplings -Transmission, -Fans, -Coolant tanks, -Interior-Steering -Tool Production <p>-Compression & Composites Molding using GMT, GLF, IMC & SMC technologies</p> <ul style="list-style-type: none"> -Spare wheel wells, Engine encapsulation, Front-end carriers, Underbody linings, Seat components, Battery mounts
<p>Window Regulators & Door Checkers</p>		
<p>Keys (Mechanical & Electronic) & Key Duplicating machines</p>		
<p>Die Castin-Zinc, Aluminium & Gravity</p>		
<p>Surface finishing- Electroplating (Ni, Ni-Cr), Powder Coating, Painting</p>	<p>Wiring Harness, Couplers, Terminals, Relay Box, Junction box etc.</p>	

Ashok Minda Group Companies

Minda Management Services Ltd.	Group Corporate
Minda Valeo Security Systems Pvt. Ltd	4W (PV/HCV/LCV) Mechanical & Electronic Security Systems
Minda Corporation Ltd.	2/3W, Tractor & Off- Road Vehicles Mechanical & Electronic Security Systems, Window Regulators, Die Casting, Surface Finishing, E Bike Controllers, Plastic Interiors.
Minda Silca Engineering Ltd.	Keys & Key Duplicating Machines
Minda SAI Ltd.	Wiring Harness, Components
Minda Furukawa Electric Pvt. Ltd.	Wiring Harness, Components, Steering Roll Connectors
Minda Stoneridge Instruments Ltd.	Instruments Clusters & Sensors
Minda Schenk Plastic Solutions, GmbH, Esslingen, Czech Republic	Interiors
Minda Schenk Plastic Solutions ,Hemhofen	Interiors
Minda Schenk Plastic Solutions Sp. ZO. O., Bydgoszcz Poland	Interiors
Minda Schenk Plastic Solutions GmbH Koengen, Germany	Interiors
Minda KTSN Plastic Solutions GmbH & Co. KG.	Interiors
Uz Minda LLC	Lock sets, Door Handles, Glove Box, Actuators, Instrument Clusters, Digital Clocks , Chime Bells, Relays & Sensors
Minda Europe BV	Marketing & Logistics Office
Dorset Kaba Security Systems	Builder Hardware & Sanitary Fittings
<i>Minda Autocare Ltd.</i>	<i>After Market</i>
<i>PT Minda Asean</i>	<i>All product of Minda Group for Asean Market.</i>
<i>Minda Vietnam Company Ltd.</i>	<i>All product of Minda Group for Asean Market.</i>

Europe (6)

Uzbekistan(1)

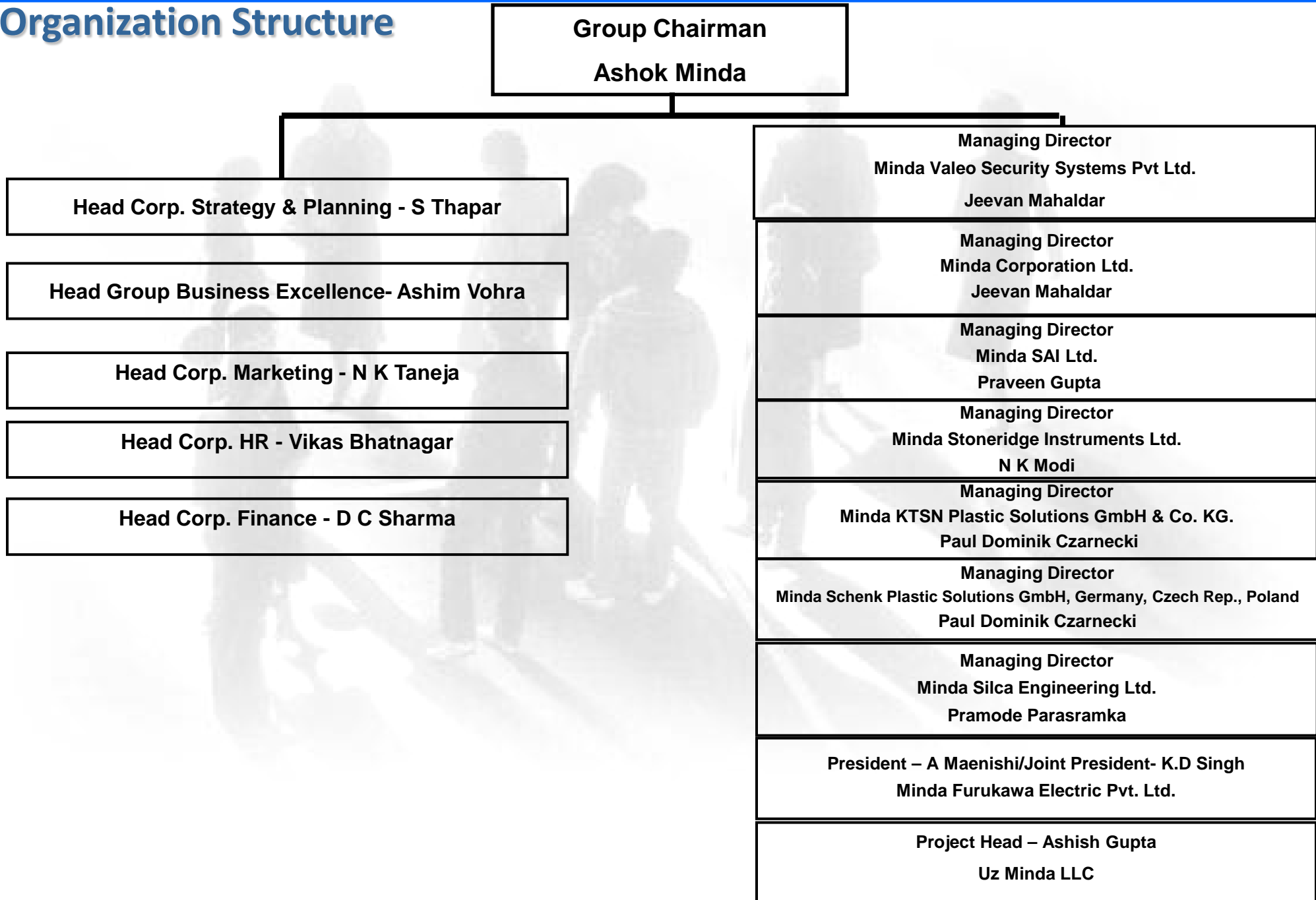


Japan (1)-
Design Off

Vietnam (1)

Indonesia (1)

Organization Structure



Vision

A faded, grayscale background image showing a group of approximately ten people standing in a line on a stage or platform, possibly during a presentation or event. The image is semi-transparent, allowing the vision text to be clearly visible over it.

“To be a dynamic, innovative and profitable global automotive organization for emerging as the preferred supplier and employer to create value for all stakeholders”



***Business Units
India***



MINDA Corporation Ltd
Plant Location : Noida, Pune, Aurangabad,
Pantnagar



MINDA Stoneridge Instruments Ltd
Plant Location : Pune



MINDA SILCA Engineering Ltd
Plant Location : Noida



MINDA Valeo Security Systems Pvt. Ltd
Plant Location : Chakan (Pune)



MINDA Furukawa Electric Pvt. Ltd
Plant Location : Bawal (Haryana)



MINDA SAI LTD
Plant Location : Noida, Mumbai,
Chennai, Pithampur

Product Range	4-wheeler (PV/HCV/LCV)- Electronic & Mechanical Security Systems, Immobilizers, Latches, Strikers, Door Handles, Electronic body controllers, Start Systems & power closure systems.
No. Of Employees	561
Quality Certification	ISO/TS-16949: 2002, ISO-14001, Q1 Status from Ford
Plant Location	Pune
Joint Venture Partner	Valeo Security Systems, France

Major customers



Major Products



Minda Corporation Ltd.

Product Range	2/3 Wheeler, Tractor & Off-Road Vehicles Electronic & Mechanical Security Systems, Immobilizers, Electronic Vehicle Controllers, Window Regulators, Interiors
No. Of Employees	1325
Quality Certification	ISO/TS-16949: 2002 & ISO-14001,
Plant Location	Noida, Pune, Aurangabad, Pantnagar
Collaborator	Castellon, Spain, Orbital Australia NEC, Japan



Minda Corporation Ltd. (Die Casting Division)

Product Range	High pressure Die Cast Components (Zn & Al) & Assemblies, Gravity Die Casting
No. Of Employees	353
Quality Certification	ISO-9001: 2002, ISO-14001,
Plant Location	Noida, Pune

Major Customers

Logos of major customers including DANAHER, Schneider Electric, legrand, Valeo, Grote, MOSDORFER, BOSCH, and LUMAX MAGNA DONNELLY.

Major Products

A grid of six images showing various die-cast metal components, including brackets, flanges, and structural parts.

Minda Corporation Ltd. (Surface finishing Division)

Services	Electroplating (Ni, Ni-Cr), Powder Coating, Painting
No. Of Employees	223
Plant Location	Noida



Major Products



Minda Silca Engineering Ltd.

Product Range	Keys (Mechanical and Electronic), Key Duplicating Machines, Lock Barrel Assembly, Sheet Metal Components
No. Of Employees	420
Quality Certification	ISO/TS-16949:2002 Certified
Plant Location	Noida
Joint Venture Partner	Silca, Italy

Major Products




Minda Stoneridge Instruments Ltd

Product Range	Instrument Clusters, Gauges, Digital Clocks, Tank Units, Dashboard assemblies, Sensors, BCM, Road Speed Limiter, Tachograph
No. Of Employees	1205
Quality Certification	ISO/TS-16949: 2002, ISO-9001:2002, ISO 14001, OHSAS 18001
Plant Location	Pune
Joint Venture Partner	Stoneridge, USA

Major customers



Major Products



Minda SAI Ltd.

Product Range	Wiring harness, Wire sets, Components, Automotive wires
No. Of Employees	2355
Quality Certification	ISO-9001
Plant Location	Noida (2), Mumbai, Chennai, Pithampur

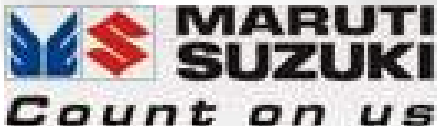


Major customers

A collection of logos for major customers of Minda SAI Ltd., including Honda, Yamaha, Hero Honda, GM, Ashok Leyland, Mahindra, Asia, Reva, Subros, Eicher, Piaggio, TAFE, and Creo.

Major Products

Four photographs showing different types of automotive wiring harnesses and wire sets, illustrating the company's product range.

Product Range	Wiring Harness, Coupler, Terminals, Relay Box, Junction Box, Steering Roll Connectors
No. Of Employees	1042
Plant Location	Bawal, Haryana
Joint Venture Partner	Furukawa Electric Co. Ltd. & Furukawa Automotive Systems INC. Japan

Major customers	Major Products
 	

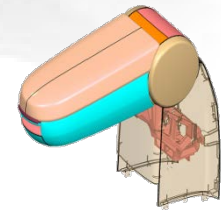
Minda Corporation Ltd. (Plastics Division)

Product Range	Dashboard, Door Trims, Floor Console, Pillar Trims, Parcel Shelf, Air Vents, Air ducts, Ash Trey, Cup Holder, Bumper, Bumper Grills, Body Side Molding, Tailgate Trims, Fender, Cylinder Head Cover & Oil Sump in Plastic.
No. Of Employees	60
Plant Location	Chakan-Pune
Collaborator	KTSN-Germany, Minda Schenk Plastic Solution- Germany, Czech Republic, Poland

Major Customers



Major Products





***Business Units
Europe***



Minda Schenk Plastic Solutions GmbH
Esslingen



Minda Schenk Plastic Solutions s.r.o.
Liberec



Minda Schenk Plastic Solutions Sp. z o.o.
Bydgoszcz



Minda Schenk Plastic Solutions GmbH
Hemhofen



Minda KTSN Plastic Solutions GmbH & Co. KG
Pirna



Minda Schenk Plastic Solutions GmbH
Koengen, Germany

<p>Product Range</p>	<p>High end interior systems for cars & technical parts for technical applications including Skinform technology, Headrest Cover, Seat Cover, Cupholders, Tank Closure Modules, Backpanels, Glove Box, Armrests, Ashtrays etc.</p>
<p>No. Of Employees</p>	<p>400</p>
<p>Plant Location</p>	<p>Esslingen, Germany Liberec, Czech Republic</p>

Major customers



Mercedes-Benz



Volkswagen. Das Auto.

Major Products



Plant Köngen

<p>Product Range</p>	<p>Spare wheel wells, Engine encapsulation, Front-end carriers, Underbody linings, Seat components, Battery mounts, Suds containers for washing machines, Fenders, Dashboard/IP's based on GMT, GLF, IMC & SMC technologies</p>
<p>No. Of Employees</p>	<p>172</p>
<p>Plant Location</p>	<p>Kongen, Germany</p>

Major Customers



Major Products



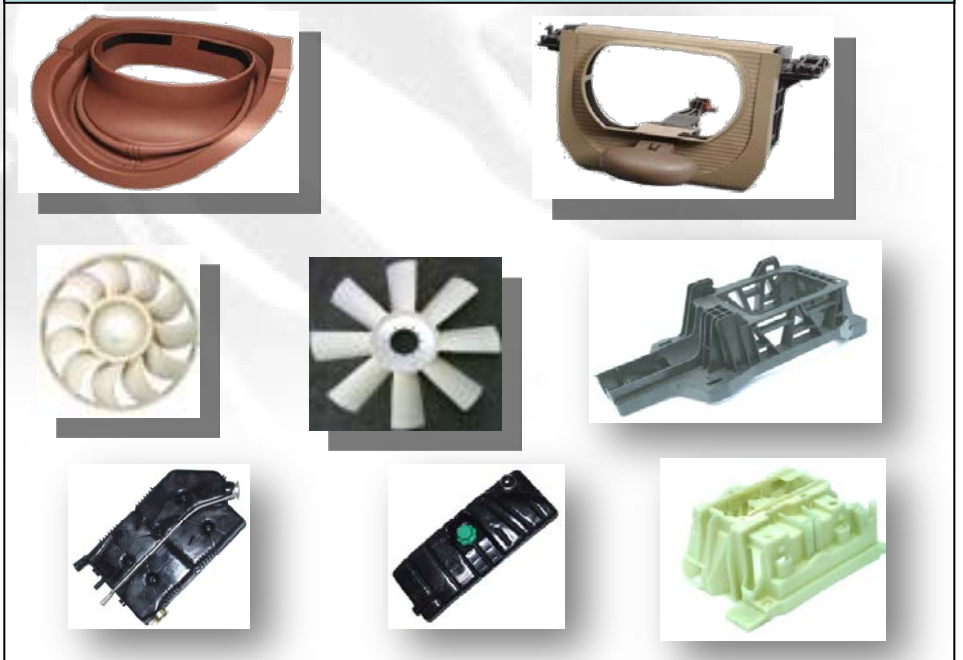
Plant Hemhofen

Product Range	Small and big fans, Frames, Covers, Transmission, Interior Steering and Plastic Injection Moulding Business.
No. Of Employees	48
Plant Location	D-91334 Hemhofen, Germany

Major Customers



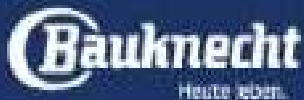
Major Products



Minda Schenk Plastic Solutions SP.ZO.O., Bydgoszcz Poland

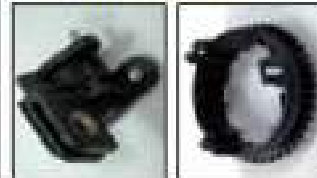
Product Range	High-end Tool shop/ Plastic parts for Automotive/ Engineering/ Electronics/ White-ware/ Pneumatic Parts
No.of Employees	115
Plant Location	Poland 85-861 Bydgoszcz

Major Customers



Major Products

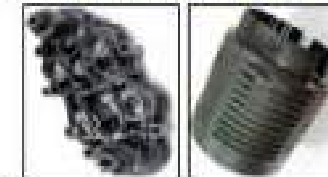
Automotive



Engineering



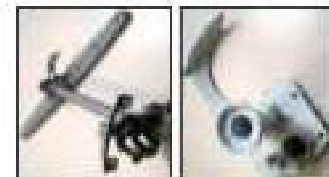
Pneumatic Parts



Electronics



White Ware



Minda KTSN Plastic Solutions GmbH & Co. KG.

Product Range	Glove Compartments, Cup Holders, Ashtrays, Centre Consoles, Door Handles, Door & Steering column cladding, Seat facing including Drawer, Entrance trims, Wheel House inner panels, Engine Compartment parts, Oil Sumps, Air Ducts
No. Of Employees	267
Quality Certification	DIN EN ISO 9001, VDA 6.1 and QS 9000 certification
Plant Location	Pirna, Germany

Major customers

Major Products



***Business Units
ASEAN & CIS Region***

Ashok Minda Group-Business Units

ASEAN & CIS Region



PT MINDA ASEAN
Plant Location : Jakarta, Indonesia



MINDA VIETNAM CO. LTD
Plant Location : VinPhuc, Vietnam



UZ MINDA LLC.
Plant Location: Navoi, UZBEKISTAN

Product Range	Lock sets, Outside Door Handles, Lock A Glove Box, Actuators Clusters, Digital Clocks , Chime Bells, Relays & Sensors.	Instrument
No. Of Employees	65	
Plant Location	Tashkent , Republic of Uzbekistan	



Product Range	2 Wheeler Switches and Locks
No. Of Employees	365
Plant Location	Jakarta, Indonesia

Major Customer



Major Products



Product Range	2 Wheeler Switches/ Locks
No. Of Employees	51
Plant Location	Vin Phuc, Vietnam 11 Km from Airport & 9 Km from Yamaha Vietnam

Major Customer



Major Product





Corporate Social Responsibility





Minda Bal Gram provides long-term and sustained institutional care to the children in need. The Bal Gram believes in the all round development of the children residing in Bal Gram. In order to fulfil its objectives and long term goals the institution provides physical, mental, spiritual, residential and educational development opportunities to the children.



Minda Bal Gram

Minda Bal Gram has four residential blocks for kids, boys and girls:

⇒ SADBHAV SADAN- Home for pre-primary level kids

⇒ SANSKAR SADAN- Home for Primary level children

⇒ SANKALPA SADAN- Home for Upper Primary level children

⇒ SHRADDHA SADAN- Home for Girls of age between 10 and 15, and

⇒ PRATIGYA SADAN- Home for Teenage boys.



Minda Vidya Niketan

A Preparatory School for Nursery Kids:

- ✓ The Trust runs a Project on Education which is Minda Vidya Niketan.
- ✓ Nursery Kids are prepared till they are not eligible to get admission in different schools.
- ✓ According to their ability and potential, they are sent to various schools.

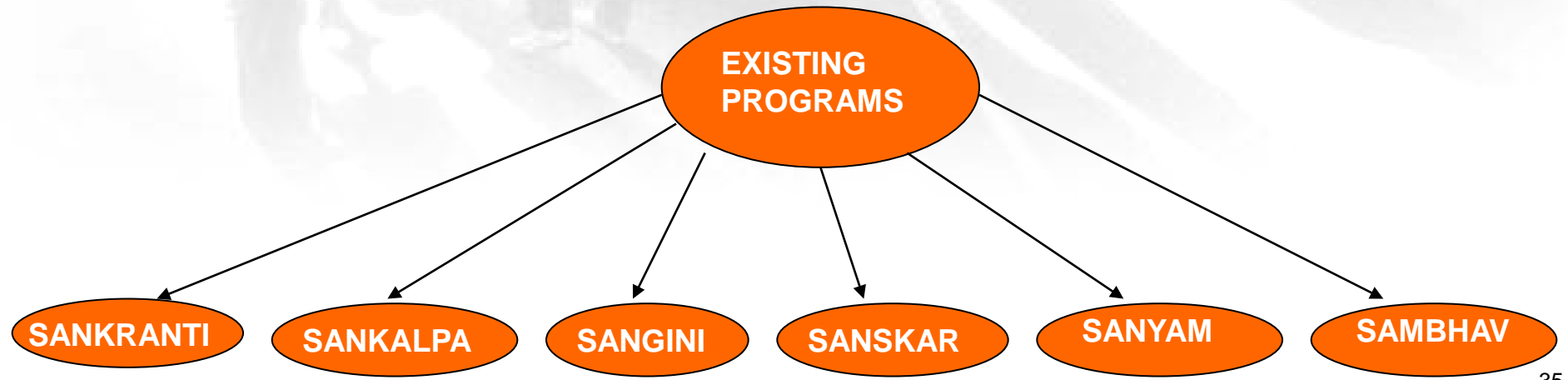


CURRENT STATUS:

- ❑ 30 students currently going to Mata Sukhdevi English Medium Public School, at Nangali Poona
- ❑ 23 boys go to the Government Boys Senior Secondary School at Narela
- ❑ 22 girls go to the Government Sarvodya Kanya Vidyalaya at Alipur in Delhi
- ❑ Remaining children are in Nursery and K.G. and are being prepared at Minda Vidya Niketan to be eligible to get admission in such various schools.

Minda Seva Kendra

- ◆ This project is mainly for the rural development
- ◆ The center was established in January 2007 in Bagla village of Hisar District in Haryana
- ◆ Under this project the Trust has adopted the village and is working towards making it an **'Ideal Village'**.
- ◆ Minda Seva Kendra has various existing programs:



Minda Vidya Mandir

- ◆ **The Moga Devi Charitable Trust is currently planning to setup a school for providing quality education to children of Bagla village.**
- ◆ **This school will eliminate the current crisis in quality education in the area.**
- ◆ **The focus will be to disseminate quality education to children so that they grow up to become successful individuals in life.**

Minda Sanjivani Kendra

- ◆ The Kendra will address the health concerns of the residents of Bagla village.
- ◆ The Kendra is in the planning phase and will be operational within a short time.
- ◆ The focus will be to deliver health services to women during maternity so that the infant mortality is reduced.
- ◆ The center will also serve as a health center for day to day health problems of villagers



Thank You